



curve®

INSTRUCTION MANUAL

## GENERAL SAFETY, OPERATING INSTRUCTIONS AND LIMITED WARRANTY

### READ CAREFULLY BEFORE USING YOUR FIREARM

**Important: Keep this manual with your firearm.**

The information contained in this manual is useful, both for beginners and experienced shooters. In addition to important information about the function, cleaning, and care of the firearm, the manual contains instructions that will be very helpful in shooting. The most important rule of safe firearm handling is always keep the muzzle pointed in a safe direction.



The world's first and only curved firearm engineered to fit the unique contours of your body, Taurus Curve® is one ultra-comfortable, ultra-reliable personal protection handgun.

[TaurusUSA.com](http://TaurusUSA.com)

[f/TaurusUSA](https://www.facebook.com/TaurusUSA)

[@taurususa](https://twitter.com/taurususa)

[i/TaurusUSA](https://www.instagram.com/TaurusUSA)

**curve®**

- First-Ever Viridian Laser/Light Module built into frame
- Smooth lines ensure no visible “printing”
- Snag-free design
- Bore-axis sighting system for instinctual shooting
- Built-in holster-free belt clip
- .380 Auto, 6+1 capacity
- Lightweight 13 oz. subcompact pistol
- Trigger shield included

**curve® Non-Laser Light Model**

- Smooth lines ensure no visible “printing”
- Snag-free design
- Bore-axis sighting system for instinctual shooting
- Built-in holster-free belt clip
- .380 Auto, 6+1 capacity
- Lightweight 13 oz. subcompact pistol
- Trigger shield included

**ECR INSTANT-ON**



# CONTENTS

Firearms Safety .....	7
Get To Know Your Pistol.....	15
Ammunition .....	19
Operating Instructions.....	23
Disassembly .....	26
Assembly .....	29
Care and Maintenance.....	31
Exploded View .....	32
Taurus® Service Policy.....	34



## WARNING




The safety warnings in this booklet are important. By understanding the dangers inherent in the use of any firearm, and by taking the precautions described herein, you can safely enjoy your Taurus® firearm. Failure to follow any of these warnings may result in serious injury to you or others, as well as severe damage to the firearm or other property.

## NOTICE

Please reference Viridian Laser/Light Module for Taurus Curve Manual for Laser/Light operation and safety instructions.

NOTES

SIGNAL WORDS AS DEFINED BY  
ANSI Z535.6 AND Z535.4 STANDARDS.

 <b>DANGER</b>	DANGER indicates a hazardous situation which, if not avoided, will result in death or serious injury.
 <b>WARNING</b>	WARNING indicates a hazardous situation which, if not avoided, could result in death or serious injury.
 <b>CAUTION</b>	CAUTION indicates a hazardous situation which, if not avoided, could result in minor or moderate injury.
<b>NOTICE</b>	NOTICE is used to address practices not related to physical injury.

*Intentionally left blank*

The Curve is a unique pistol, designed to meet the needs of the concealed carry user. It is small in size, but big on features. It has roughened surfaces on the front and rear of the grip, a belt/pants clip and a curved grip frame to hug your body. The Curve has two different sighting systems (unless you have the non-laser model) and an integral flashlight. Your Curve has “landmarks” on the frame and magazine to aid you in safely handling the pistol.

**⚠ WARNING - LIGHT USE**

Never use your flashlight to search with. Your muzzle is pointed anywhere the flashlight shines. Use your integrated sight to sight with.

Always use a second handheld flashlight to search with.



Never shine laser into anyone's eye's directly or with mirror like surface. Do not stare in beam, view directly or with optical instruments. Eye injury or blindness can result. Never aim Laser at aircraft. Reference Viridian Las Taurus Curve Manual for further and instructions.



## NOTICE

Laser Warning label supplied must be installed on the firearm with the "Laser Aperture" arrow pointing to the Laser Diode Lens (see Viridian Laser/Light Module for Taurus Curve Manual)

**WARNING**

When a firearm discharges, the bullet or shot can strike a person, resulting in death or serious bodily injury.



When a firearm discharges, the bullet or shot can strike a person, resulting in death or serious bodily injury.

The three basic keys to safe handling of firearms:

- 1. KEEP YOUR FINGER OFF THE TRIGGER UNTIL YOU ARE READY TO FIRE.** If you maintain good trigger discipline, it is extremely unlikely the firearm will fire.
- 2. KEEP THE MUZZLE POINTED IN A SAFE DIRECTION.** Even if the firearm discharges, if the muzzle is pointed in a safe direction, no one will be injured.
- 3. NEVER TRUST ANY SAFETY MECHANISM.** If you adopt the attitude that you will not trust any safety mechanism, you will be vigilant about keeping your finger off the trigger and keeping the muzzle pointed in a safe direction.



Never fire at targets at close range. Ricochets can and do cause death or serious bodily injury. What constitutes "close range" depends on many factors including target material, bullet caliber and angle of impact.

**KNOW WHAT IS BEHIND YOUR TARGET.** Unless you are shooting into a bullet trap designed to capture the type of ammunition you are firing, projectiles may pass through the target and strike anyone or anything beyond. Bullets can travel miles.

**ALWAYS WEAR HEARING PROTECTION.** Firearms are loud. The sound they generate is greater indoors. Repeated exposure to loud noises can cause deafness. Hearing protection is rated by decibel reduction. Look for “dB” reduction of 30 or more when purchasing ear protection. Modern ear protection can allow normal hearing until the sound from the discharge reaches the ear. Layering of hearing protection is recommended when exposed to multiple firearms are being discharged or when utilizing an indoor range.

**ALWAYS WEAR EYE PROTECTION.** In normal operation, firearms emit hot high-velocity gases, particles and metal. These materials flying into your eye can cause blindness. Protect your vision with proper eye protection. Any eye protection may be better than none, but look for ANSI Z87.1-2003 certified eyewear for the best protection.

**NEVER HANDLE FIREARMS WHILE UNDER THE INFLUENCE OF DRUGS OR ALCOHOL.** Firearms are dangerous. Handling firearms while impaired by drugs or alcohol is foolhardy and may result in serious injury or death. This warning includes prescription drugs that contain a warning about using machinery or driving while taking the medication.

**MODIFIED FIREARMS ARE DANGEROUS, AND USE CAN RESULT IN SERIOUS INJURY OR DEATH.** “Trigger jobs,” polishing original components or installing aftermarket parts can cause a firearm to function in ways different than intended. Some such work may also be illegal.

**DAMAGED FIREARMS ARE DANGEROUS, AND USE CAN RESULT IN SERIOUS INJURY OR DEATH.** Repairs should always be made by a qualified gunsmith or by a factory-authorized repair site. Work done by those unfamiliar with the design can cause a firearm to function in ways different than intended.

**NEVER ATTEMPT TO DISASSEMBLE OR CLEAN A LOADED FIREARM. DOING SO CAN RESULT IN SERIOUS BODILY INJURY OR DEATH.** How often have we heard “But it went off while I was cleaning it!” or, “I did not know it was loaded!” or, “It was jammed, and I tried to take it apart!”?

**IF A FIREARM GOES OFF, THERE WAS A ROUND OF AMMUNITION IN THE CHAMBER.** Period. “Clear” (or empty) the firearm of all ammunition before disassembling or cleaning.

As owner of your new Taurus® firearm, you are responsible for (1) keeping your finger off the trigger, (2) pointing the muzzle in a safe direction, (3) pulling the slide to the rear and allowing it to lock back, (4) removing the magazine and (5) looking in the magazine well and chamber to confirm the pistol is empty. An empty firearm cannot fire.

## FIREARMS SAFETY SYSTEMS

Firearms safety is supported by a system. With your pistol, the system is made up of the following:

**1. You!** Your involvement in safety cannot be overemphasized. No safety component can keep your finger off the trigger and the muzzle pointed in a safe direction. Also, you are the key to never trusting any of the mechanical parts of the safety system.

**2. Loaded chamber indicator.** When a cartridge is loaded in the chamber, the loaded chamber indicator protrudes from the top of the slide just behind the ejection port, and its surface can be seen or felt without the need for pulling the slide back to check the chamber.



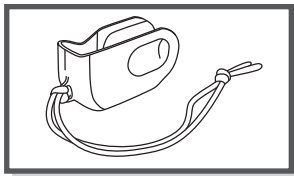
### WARNING

The loaded chamber indicator should never be used as a substitute for visually checking or feeling for an empty chamber with your finger when “clearing” or emptying a pistol.

**3. Long, Double Action trigger pull.** There is no “manual safety” on your Curve. Like many pistols, the trigger pull is long and is not done accidentally. If the trigger is pulled, the shooter intended to pull the trigger.

**4. Taurus Memory Pad™.** Your Taurus Curve has a Taurus Memory Pad™ just above the laser/light activation switch. The Taurus Memory Pad™ is where your trigger finger should rest until you are ready to fire the pistol.

**5. Trigger Shield.** Your Curve has a device, called a Trigger Shield, which is intended to act as a guard that works with the trigger guard to prevent unintended pressing of the trigger or trigger safety. Do not modify the trigger guard. The Trigger Shield can function as a pocket holster for your Curve. The Trigger Shield has a lanyard attachment on the muzzle end so that if you wish, the Trigger Shield is automatically removed when you pull your Curve off your belt or out of your pocket. For best results, wrap the lanyard around your belt.



#### **6. If Equipped with Viridian Laser/Light**

Your Taurus Curve® is equipped with Viridian's ECR® (Enhanced Combat Readiness) INSTANT-ON® laser/light activation. Utilizing this technology, **when the gun is drawn from the trigger shield, the unit activates instantly and automatically.** See Viridian Laser/Light Module for Taurus Curve manual for operation and safety instructions.



## INSTANT-ON

**7. Smooth Profile.** Sometimes firearms carried on your person may snag clothing during handling. Snagging a firearm on anything can cause you to lose control of the firearm and that is a dangerous condition.

Your Curve has a smooth profile designed to minimize the chance of snagging on clothing or other things.

**8. This Manual.** Taurus intends for you to use this manual to learn about your pistol and to help you use your pistol safely. If you use the manual, you will be a long way toward being a knowledgeable and safe firearms owner.

**9. On Line Resources.** TaurusUSA.com hosts a library of videos concerning safety and related issues. This library is being added to and revised. Please visit the site and take advantage of what is available there as part of your education regarding using your Taurus pistol in a safe fashion.

## MAGAZINE DISCONNECTOR



### WARNING

Your Curve is equipped with a "magazine disconnecter." Relying on this device and failing to properly clear the pistol can result in a negligent discharge causing grievous bodily injury or death.

Some jurisdictions require that pistols sold within their borders to be equipped with a device called a "magazine disconnecter." You may hear a magazine disconnecter referred to as a magazine "safety." Magazine disconnectors are not "safeties" and can themselves create dangerous situations causing injury or death.

A magazine disconnecter is intended to help individuals that either do not know how to, or fail to, properly clear a pistol and make it safe. To make any semiautomatic pistol safe, remove the magazine, pull the slide to the rear, eject any ammunition in the chamber and visually check that the chamber is empty. A magazine disconnecter is intended to disable the pistol if the shooter removes the magazine but fails to unload and clear the chamber.

#### **Magazine disconnectors can be dangerous for a number of reasons.**

1. Magazine disconnectors encourage sloppy gun handling. Shooters may become used to relying on the magazine disconnecter to make the pistol safe and then, when handling another pistol, one without a magazine disconnecter, have a negligent discharge.
2. Pistols with magazine disconnectors require the shooter to have a magazine handy to be able to clean and function check the pistol. Any time a magazine is present during cleaning and function checking a pistol, there is an increased risk that ammunition can find its way into the chamber and enable the shooter to have a negligent discharge.
3. Magazine disconnectors are not "fail safe"—they in fact "fail dangerous." Magazine disconnectors are mechanical devices and as such, can and do fail. If a magazine disconnecter fails, the pistol will fire with the magazine removed. If the shooter is relying on the magazine disconnecter because of sloppy gun handling habits, the shooter can have a negligent discharge.

## PISTOL AND REVOLVER SIZE AND SAFETY

The selection of a revolver versus a pistol as well as the size, caliber and magazine capacity of a handgun are personal choices. There are many choices to be made, and there are advantages and disadvantages for each. When selecting a pistol, size has safety implications because of the way pistols are loaded.

Generally speaking, smaller handguns may require more attention to be handled safely than medium or full-size handguns. This is because their small size makes it easier to point the muzzle at your hand or to “sweep” (swing the muzzle across your body) yourself or others in ordinary handling.

When chambering a round, we recommend pulling the slide to the rear by gripping the rear of the slide, with the muzzle pointed straight and away from your body and in a safe direction.

## SAFE CARRY CONDITION

“Safe Carry Condition” is the most ready-to-fire condition that the user feels is reasonable under the circumstances. Generally, we believe that Taurus® pistols should be carried with a full magazine and an empty chamber. Under most circumstances, this provides the best balance of readiness and safety. On the plus side, if the chamber is empty, unintended discharges are minimized. However, the slide must be manipulated to load a round in the chamber. In emergency circumstances, this can be difficult to do safely and correctly.

If the user believes that he or she is faced with an increased threat, chambering a round is appropriate. For safety reasons, this should be done beforehand with the muzzle pointed in a safe direction, your finger off the trigger and on the Taurus Memory Pad™. If equipped, place the manual safety in the “safe” position. How do you know you may be going into a more dangerous situation? That depends. If, for example, you carry cash to deposit after a business closing, this may well qualify. If a domestic partner is actively threatening you, this may qualify as well.

“Safe Carry Condition” is a judgment call and must be made by the user. Some users routinely face greater threats than others. Users must be aware of their situation and circumstances. Errors in judgment can have dire and tragic outcomes if firearms are present.

## CARRYING FIREARMS

Carrying a firearm can be dangerous. Carrying a firearm makes it more difficult to control the muzzle and makes it more likely that the firearm can be dropped or bumped causing the firearm to fire.

In almost all circumstances, it is safest to carry a handgun in a holster designed for that specific handgun. Carrying a handgun in a pocket without a specific designed In-Pocket Holster or a trigger shield or in a waist band without a belt clip is always a last choice. Carrying any handgun in a holster that fits the firearm and style of carry should prevent it from accidentally falling and you from losing control of the muzzle.

Except in rare high-threat circumstances, carry your pistol with a full magazine and an empty chamber. If the chamber is empty, the pistol cannot fire.



### WARNING - CARRYING

Do not carry your firearm in any way that might let it fall or be bumped. If a firearm falls or is bumped, it may fire.



### WARNING - CARRYING

Always review and follow the holster or luggage manufacturer's instructions or the firearm may fall or be bumped and fire.

# FIREARMS STORAGE AND GUN LOCKS

How you secure your firearms is a personal choice based on the unique circumstances in your home, business or vehicle and the laws of the state where your firearm is located. Any choice you make about securing your firearms will present advantages and disadvantages. It is up to you to weigh those advantages and disadvantages and choose which security method is best for you and those around you.



## WARNING - LOCKING

Never lock a firearm with a round of ammunition in the chamber. Unlocking a loaded firearm makes it more difficult to maintain trigger discipline and to keep the muzzle pointed in a safe direction.



## WARNING

Securing your firearm may inhibit access in a defensive situation and may result in injury or death.



## WARNING

Failure to secure a firearm may result in injury or death. Properly securing a firearm means storing your firearm unloaded, decocked and securely locked, with all ammunition in a separate location.

# GET TO KNOW YOUR PISTOL





SPECIFICATIONS

Model	PT CURVE
Caliber	.380 Auto
Action	Double Action Only (DAO)
Capacity	6+1 Rounds
Barrel Length	2.5"
Overall Length	5.18"
Overall Height	3.7"
Overall Width	1.18" (0.88" grip)
Sights	Bore Axis System, Laser/Light (on selected models)
Trigger Pull	(5-7) lbs
Weight (unloaded)	13 oz.
Materials	Slide: Carbon Steel Barrel: Stainless Steel Grip: Polymer with Metallic Subframe
Safety Devices	Loaded Chamber Indicator, Taurus Security System®, Trigger Shield, Magazine Disconnecter, Taurus Memory Pad™
Slide - Finish	Matte Black
Laser/Light Module	See Viridian Laser/Light Module for Taurus Curve manual for specifications

THE TAURUS SECURITY SYSTEM®

Your pistol is equipped with the Taurus Security System (TSS). This system is intended to give the user a “built-in locking system” for the firearm. You may, of course, secure your pistol in any way you see fit.

If you use the TSS:

- Point the pistol in a safe direction and keep your finger off the trigger.
- Remove the magazine and ensure it is empty.
- Pull the slide to the rear and check to see that the chamber is empty.
- Re-insert the empty magazine and pull the trigger to lower the concealed hammer.
- Insert the TSS key in the lock and turn the key clockwise to engage. The lock now protrudes so you can see and feel that it is engaged.

Engagement (secure)

- Insert the **key** into the mechanism and **turn clockwise** until a click is felt or heard.  
This engages the TSS.
- The action is locked in place and cannot function.

Disengagement (ready-to-fire)

- To place the pistol in a firing condition, insert the **key** into the mechanism and turn it **counterclockwise** until a click is felt or heard.
- The pistol can now be fired.

## NOTICE

Never engage the TSS with the slide in the open rear position or the hammer back in the cocked position. This will result in permanent damage to your pistol.

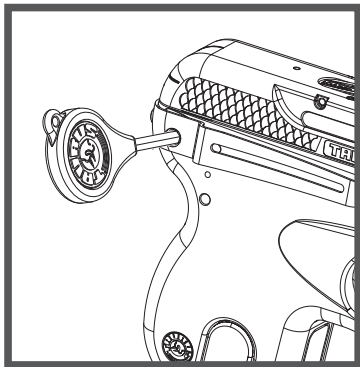
### Unlocking the pistol with the TSS

To deactivate the TSS, rotate the key counterclockwise until the lock button is level with the grip surface.



## WARNING

Never attempt to engage the TSS on a Taurus® pistol with a cartridge in the chamber.



## AMMUNITION



## WARNING

Using the wrong ammunition in your pistol can result in serious bodily injury and damage to your pistol. Make certain the ammunition you load in the magazine is the same caliber as is marked on the pistol.



## WARNING - AMMUNITION AND INDUSTRY STANDARDS

Use only clean, dry factory-loaded ammunition. Old, damaged, wet or oily ammunition may fire at pressures higher than industry standard, causing injury to you and bystanders or damage to your pistol.

Do not use reloaded ammunition in your pistol. Its firing pressures are unknown and may well exceed industry standard, causing injury to you and bystanders or damage to your pistol.

Odd sounds are signs of trouble. If a round “does not sound right” when it goes off, stop firing right away. A bullet may be stuck in the barrel. Firing the pistol in this condition may cause pressures higher than industry standard, causing injury to you and bystanders or damage to your pistol.

If you hear any odd sounds when firing your pistol, stop firing, clear the pistol and “field strip” (or disassemble) the pistol in accordance with the procedures listed in this manual. Once the barrel is removed from the slide, look down the bore. If you do not see light, there is something stuck in the bore. Do not fire the pistol again, and take the pistol to a competent gunsmith or contact the Taurus® Service department at 800-327-3776.



## WARNING - LEAD EXPOSURE

Discharging firearms in poorly ventilated areas, cleaning firearms or handling ammunition may result in exposure to lead and other substances known to the state of California to cause birth defects, reproductive harm and other serious physical injury. Have adequate ventilation at all times. Wash hands thoroughly after exposure with soap and cold water.

**SHOOTING OR CLEANING GUNS MAY EXPOSE YOU TO LEAD**



## WARNING

“+P” ammunition can be dangerous. There is a detailed discussion about “+P” and “+P+” ammunition on page 21 of this manual. Until you have read that information, do not fire any ammunition marked “+P” in your pistol.



## WARNING

Never fire ammunition marked “+P+” in your pistol. It does not comply with industry standards as to chamber pressures.



## WARNING

It is DANGEROUS to fire “+P+” ammunition in any Taurus® firearm, and doing so may result in serious bodily injury or death. The Sporting Arms and Ammunition Manufacturers Institute (SAAMI) does not recognize any “+P+” ammunition at all. These loads operate at unknown pressures.

There are only four calibers that can carry a “+P” rating from SAAMI. They are 38 Special +P, 9mm Luger +P, 38 Super Automatic and 45 Automatic +P. There are no other SAAMI approved “+P” loads. Any ammunition in any other caliber marked “+P” is not SAAMI compliant, may be dangerous and should not be used.

Only fire SAAMI rated Plus P (“+P”) ammunition in Taurus® models designated by Taurus for +P use as below. **Firing +P ammunition in other Taurus products may be dangerous and can result in serious bodily injury or death.**

Model 85 small-frame revolver in 38 Special.

Model 850 small-frame revolver in 38 Special.

Model 851 small-frame revolver in 38 Special.

Model 85 Polymer small-frame revolver in 38 Special.

Model 82 medium-frame revolver in 38 Special.

Model 817 compact frame (tracker) revolver in 38 Special.

All firearms chambered in 38 Super Automatic.

All firearms chambered in 45 Automatic (ACP).

All firearms chambered in 9mm Luger.

## NOTICE

Even if your Taurus® firearm is rated for Plus-P (“+P”) ammunition, such ammunition generates pressures significantly in excess of the pressures associated with standard ammunition. Such pressures may affect the useful life of the firearm or exceed the margin of safety built into many firearms. Unless you need +P ammunition, do not use it, particularly for practice.

## FIREARMS ARE NOT ALL ALIKE

Many makes and models of firearms might LOOK nearly the same. However, they differ widely in design, operation, and in the location and function of various controls. You may access the Taurus® website at [TaurusUSA.com](http://TaurusUSA.com) to view and print manuals.

### “JAMS”

**SOMETIMES A CARTRIDGE OR SHELL CASE MAY BECOME “JAMMED” OR STUCK IN THE PISTOL. TO CLEAR THE JAM, (1) POINT THE MUZZLE IN A SAFE DIRECTION, (2) KEEP YOUR FINGER OFF THE TRIGGER, (3) REMOVE THE MAGAZINE, THEN (4) PULL BACK THE SLIDE AND HOLD IT (NO SLIDE CATCH) TO THE REAR. THE JAMMED CARTRIDGE OR CASE CAN NOW BE REMOVED. (THERE IS NO SLIDE CATCH, TO LOCK THE SLIDE TO THE REAR AN EMPTY MAGAZINE MUST BE INSERTED INTO THE GRIP.**



### WARNING - FIRING

The slide opens and shuts quickly while firing. Keep face and hands away from rear of slide. Hot brass is ejected quickly and can burn you. Always wear shooting glasses, hat with brim, and hearing protection.



### WARNING - ANY GUN MAY FIRE IF DROPPED

If dropped or struck, the pistol may fire.



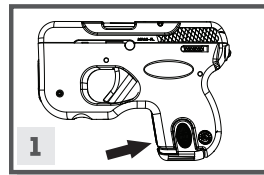
### WARNING

If dropped or struck the firearm should be inspected by a trained armorer/gunsmith for a complete function check. While the firearm was dropped or struck mechanisms, including automatic safeties, may not function as intended resulting in accidental death or serious injury.

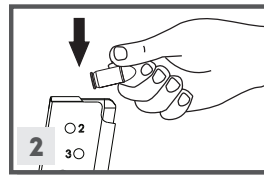
## OPERATING INSTRUCTIONS

The Curve has a concealed hammer firing mechanism. It operates as a conventional Double Action system. You must pull the trigger all the way to the rear every time you wish to fire the pistol.

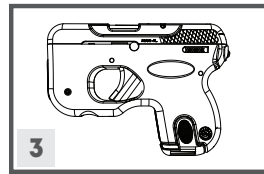
**To load and fire your pistol:**



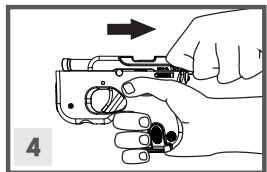
1. Remove the magazine by pressing the magazine release button, located on the magazine at the base of the grip, with your thumb.



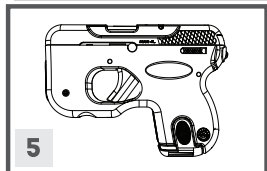
2. Hold the magazine in one hand and insert cartridges, one at a time, bullet forward, by pressing them down and to the rear.



3. Insert the magazine into the pistol until it is held by the magazine catch. If the magazine is not correctly inserted into the pistol, it can fall out.

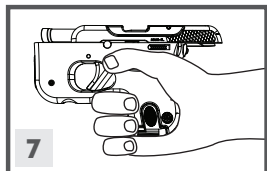


4. Hold the pistol with one hand, pointed in a safe direction and keeping your finger away from the trigger. With the other hand pull the slide toward you to its limit and release it. Do not let the slide “ease forward.” Let it go. You will not hurt it and if the slide is not allowed to close as intended, you can cause a malfunction.



5. The pistol is now cocked and ready to fire by pulling the trigger.

6. Aim the pistol either with the laser (if your model features the laser) or the Bore-axis sighting system™ (cross marks on the rear of the slide). To fire, pull the trigger smoothly and fully to the rear. See page 25.



7. After firing, the slide will “recoil” (come back toward you) and eject the empty cartridge case and then, in the blink of an eye, feed another cartridge into the chamber. The pistol will be ready to fire again. After the last round is out of the magazine, the slide will remain in the open position. In order to make the slide return to its forward position, with the magazine removed, pull the slide slightly to the rear and release the slide.

#### 8. If Equipped with Viridian Laser/Light

Your Taurus Curve® is equipped with Viridian's ECR® (Enhanced Combat Readiness) INSTANT-ON® laser/

light activation. Utilizing this technology, **when the gun is drawn from the trigger shield, the unit activates instantly and automatically.** See Viridian Laser/

Light Module for Taurus Curve manual for operation and safety instructions.



## INSTANT-ON

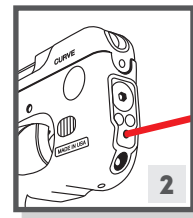
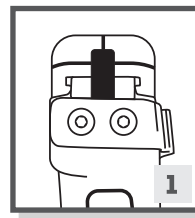
## AIMING YOUR CURVE PISTOL

Your Curve is designed to be concealable and not to snag on clothing during handling. This means that there are no traditional “iron sights.” The Curve features the integrated Bore-axis sighting system™.

### The “sights” are:

1. The lines seen on the rear of the slide, which form a cross and align with the bore (center) of the barrel, used in conjunction with the two ears of the Loaded Chamber Indicator or,
2. The laser (for laser model).

The point of aim for your Curve is at the bottom of the “bull’s eye.”



## NOTICE

Please reference Viridian Laser/Light Module for Taurus Curve Manual for Laser/Light operation and safety instructions.

## DISASSEMBLY, OR “FIELD STRIPPING” YOUR PISTOL

### WARNING

In order to meet certain State's regulatory requirements, this pistol is equipped with a "Magazine Disconnecter." See page 11. Magazine disconnectors create dangerous conditions. In connection with the disassembling and cleaning your Curve, you must insert and remove the magazine several times. This presents the opportunity for ammunition to find its way into the pistol and for you to have an unintended discharge.

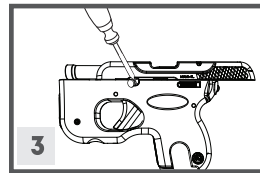
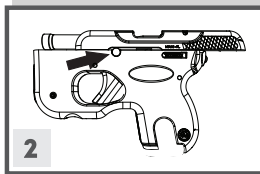
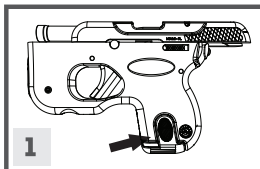
### WARNING

Always wear eye protection that is specified for use with firearms (ANSI Z87.1+) every time you handle your firearm for cleaning and maintenance.

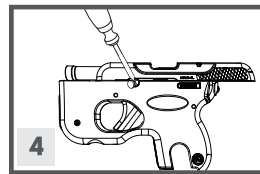
**You must be very careful to see that there is no ammunition in or around your Curve when disassembling or cleaning your Curve to avoid serious bodily injury or death.**

1. Make certain there is no ammunition in the magazine. Look in the chamber and make certain the chamber is “empty,” that is, there is no ammunition in the chamber. With the muzzle pointed in a safe direction, your finger off the trigger, and the magazine in the pistol, pull the slide to the rear and let it lock open. Remove the magazine by pressing the magazine release on the magazine.

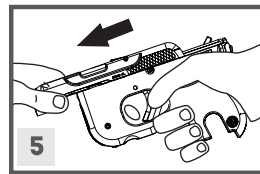
2. Locate the round pin on the left side of the frame, just below the slide and above the trigger guard.



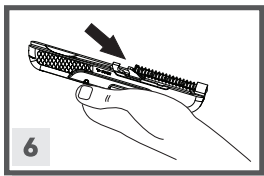
3. Insert a pointed object, such as a dental pick or paperclip, under the round pin surface and in the recessed groove in the slide. Please note using a metal device, could damage or scratch the finish.



4. Lift the pin free of the frame.



5. Remove the magazine from the pistol so the slide can move forward. Pull the slide fully to the rear. The slide can now be removed from the frame by pulling the slide off the front of the frame.

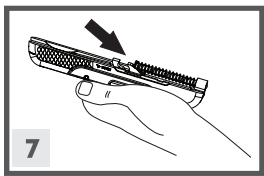


6. Look at the underside of the slide and locate the guide rod and spring.



## WARNING

Take care to prevent the forcible ejection of the recoil spring assembly and compressed recoil spring.

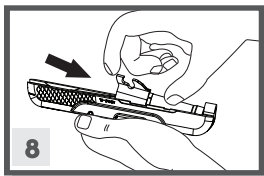


7. Lift the guide rod free of the barrel.



## WARNING

Always wear eye protection that is specified for use with firearms (ANSI Z87.1+) every time you handle your firearm for cleaning and maintenance.



8. Slide the barrel forward just a bit and lift it free of the slide. Your Curve is now disassembled for cleaning.

Caution: Further disassembly should only be performed by a skilled gunsmith. Any damage caused by further disassembly is not covered under manufacturer's warranty. In addition, any work performed may void the warranty.



## WARNING

No further disassembly is recommended unless done by a skilled gunsmith.

## ASSEMBLY

Reassembly of your pistol is the reverse of the disassembly process with the following notes:

1. With the slide upside down, place the barrel in the slide and move the barrel as far to the rear as it will go. The spring and guide rod is a separate assembly.

2. Insert the spring/guide rod assembly into the slide over the bottom of the barrel. You will have to compress the spring on the guide rod to do this. The plate on the rear end of the guide rod rests in the slot on the bottom of the barrel.

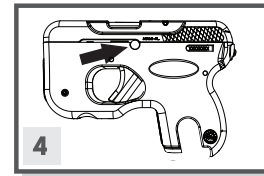
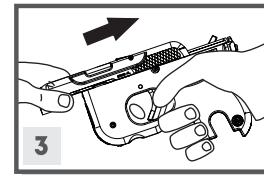
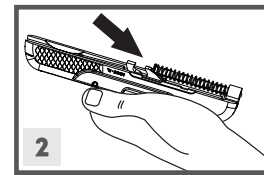
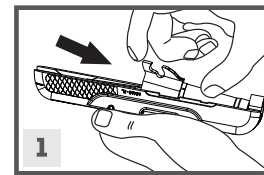
3. Place the slide assembly on the frame rails and push the slide to the rear until you meet resistance.

4. Insert the takedown pin back in the hole from which it was removed. TIP: Do not let the tip of the takedown pin protrude beyond the inside of the frame rail.

Put pressure on the tip of the takedown pin. Push the slide further to the rear and allow the takedown pin to seat in the frame.

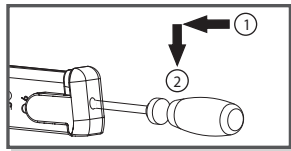
5. With the muzzle pointed in a safe direction, the magazine out of the pistol and no round in the chamber, cycle the slide several times to make sure the slide is free to move on the frame rails and properly mounted.

**Your Curve is now assembled.**



## DISASSEMBLING YOUR MAGAZINE

1. Use a punch to press in on magazine spring seat/clip.
2. With the base of the magazine pointed away from your face, slide the magazine floor plate, 1, toward the front of the magazine like in Position 1 and 2.
3. Withdraw magazine spring plate and magazine spring from magazine body. Turn the magazine upside down and remove the magazine follower.
4. Assemble in reverse order.



### WARNING

The magazine spring is under pressure and may fly out with the floor plate causing injury to anything it strikes, including your face and eyes.



### WARNING

Always wear eye protection that is specified for use with firearms (ANSI Z87.1+) every time you handle your firearm for cleaning and maintenance.

## CARE AND MAINTENANCE

The firearm may be cleaned and lubricated under normal conditions with the disassembly steps described in pages 26-28.

In order to keep a firearm safe to use, it must be kept clean and covered with a light film of good quality oil to prevent corrosion. The barrel bore should be cleaned and left free of debris.

For normal cleaning, rub it with a lightly oiled cloth. In the same way, proceed with the bore of the barrel. Excess oil should be removed. Dust should be removed from all crevices with a small clean brush.



### WARNING

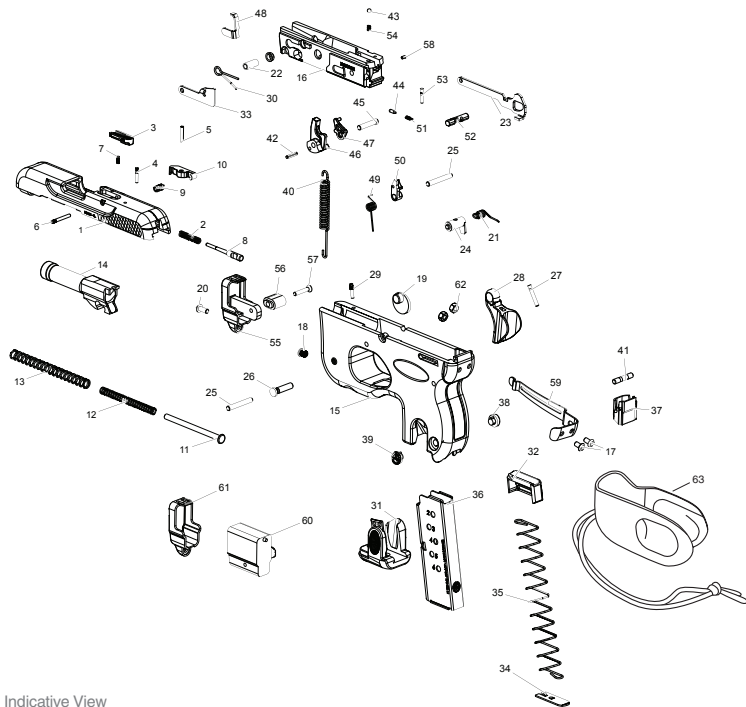
Before cleaning, (1) point the muzzle in a safe direction, (2) keep your finger off the trigger, (3) remove the magazine, then (4) pull back the slide and lock it to the rear.

### NOTICE

Please note that a firearm with laser should not be cleaned in a well or supersonic machine that submerges the firearm as this can damage the laser system.



## EXPLODED VIEW



Indicative View

## PART LIST

- |                                |                                  |
|--------------------------------|----------------------------------|
| 1 SLIDE                        | 35 MAGAZINE SPRING               |
| 2 FIRING PIN SPRING            | 36 MAGAZINE BODY                 |
| 3 LOADED CHAMBER INDICATOR     | 37 GRIP CAP                      |
| 4 FIRING PIN                   | 38 RIGHT TAURUS MEDALLION        |
| 5 EXTRACTOR SPRING PIN         | 39 LEFT TAURUS MEDALLION         |
| 6 LOADED CHAMBER INDICATOR PIN | 40 HAMMER SPRING                 |
| 7 EXTRACTOR SPRING PIN         | 41 HAMMER SPRING SUPPORT PIN     |
| 8 FIRING PIN                   | 42 HAMMER SPRING PIN             |
| 9 EXTRACTOR SPRING             | 43 KEY LOCK BALL                 |
| 10 EXTRACTOR                   | 44 MAGAZINE SAFETY PUSHER        |
| 11 RECOIL SPRING GUIDE         | 45 HAMMER PIN                    |
| 12 INTERNAL RECOIL SPRING      | 46 HAMMER                        |
| 13 EXTERNAL RECOIL SPRING      | 47 MAGAZINE SAFETY               |
| 14 BARREL                      | 48 EJECTOR                       |
| 15 GRIP                        | 49 SEAR SPRING                   |
| 16 FRAME                       | 50 SEAR                          |
| 17 CLIP SCREW                  | 51 MAGAZINE SAFETY PUSHER SPRING |
| 18 FLANGE-HEAD                 | 52 KEY LOCK                      |
| 19 FRONT BUTTON                | 53 KEY LOCK PIN                  |
| 20 LASER CAP SCREW             | 54 KEY LOCK SPRING               |
| 21 TRIGGER SPRING              | 55 FRONT GRIP CAP                |
| 23 TRIGGER BAR                 | 56 SIDE GRIP CAP                 |
| 24 TRIGGER PIVOT               | 57 GRIP CAP SCREW                |
| 25 GRIP PIN/ SEAR PIN          | 58 MAGAZINE SAFETY SPRING PIN    |
| 26 DISASSEMBLY LATCH           | 59 SIDE CLIP                     |
| 27 TRIGGER PIVOT PIN           | 60 LASER MODULE                  |
| 28 TRIGGER                     | 61 LASER MODULE CAP              |
| 29 FRONT BUTTON PIN            | 62 CLIP NUT                      |
| 30 SLIDE LATCH SPRING          | 63 TRIGGER SHIELD                |
| 31 MAGAZINE BOTTOM             |                                  |
| 32 FOLLOWER                    |                                  |
| 33 SLIDE RELEASE               |                                  |
| 34 MAGAZINE SPRING PLATE       |                                  |

## TAURUS® SERVICE POLICY

Should your firearm require adjustment or repair contact our Customer Care department at 800-327-3776.

Please follow these suggestions to expedite service in the United States to return any firearm to us for adjustment or repair.

1. Federal law permits you to return your firearm to the manufacturer for service via common carriers. However, state and local firearms laws vary greatly; you should consult your local prosecuting attorney regarding any restrictive laws in your jurisdiction regarding your shipment or receipt of firearms. With the above in mind, it is strongly recommended that any firearm sent to us for repair be sent through a federally licensed dealer.

2. All firearms must be shipped to us prepaid. WE WILL NOT ACCEPT COLLECT SHIPMENTS.

3. Be sure to enclose a letter stating your name, address and telephone number as well as serial number, caliber and barrel length of your firearm. Also state the nature of trouble experienced or work required. Merely stating “defective” or “repair as necessary” is inadequate information. Be specific and enclose copies of any previous correspondence. Work (other than warranty repair) will bear minimum labor charge of \$35.00.

4. FIREARMS MUST BE SHIPPED UNLOADED. Double check the chambers of your firearm before shipping. If firearms are sent to Taurus in a loaded condition, we are required by law to notify the Federal authorities.

5. DO NOT include telescopic sights, custom grips, holsters, or other accessories with any firearm shipped to us.

## VIRIDIAN LASER/LIGHT MODULE FOR TAURUS CURVE SERVICE AND REPAIR

All service and repairs must be performed by an authorized factory trained technician. For service or repair, please call or email.

Viridian Service ATTN.: Service/Repair 800-990-9390 (International 763-479-4091)

EMAIL: Support@ViridianGreenLaser.com

FAX: 763-479-4089

***See Viridian Laser/Light Module for Taurus Curve Manual for more information***

## PARTS

Firearms require periodic maintenance, inspection, adjustment and repair. If your pistol has a malfunction, be safe. Stop firing, “clear” and unload the pistol and take it to a competent gunsmith. Before shooting it again, contact our Customer Care department if you have any questions.

If water, sand, or other foreign matter gets in your pistol, field strip it (see pages 26-28) and thoroughly clean it. Failure to keep your firearm clean and in proper working order can be dangerous.

Our Customer Care department maintains a full stock of replacement parts for current Taurus firearms. Even though most gunsmiths have the knowledge, training and ability to make the necessary repairs to your firearm, the skill and workmanship of any particular gunsmith is totally beyond our control. Should your firearm require service, return it to our Customer Care department. Please refer to Repair Policy on the TaurusUSA.com website for information on the policy and shipping, or call 800-327-3776.

Remember, unauthorized adjustments or parts replacement can void your warranty. If you choose to have someone else do the required work, the purchaser and/or installer of parts must accept full responsibility for the correct adjustment and function of the firearm.

## IMPORTANT DO NOT DISCARD

KEEP THIS MANUAL WITH THE FIREARM  
UPON CHANGE OF OWNERSHIP.



**TAURUS INTERNATIONAL  
MANUFACTURING, INC.**  
16175 NW 49th Avenue  
Miami, Florida 33014  
Telephone: 305-624-1115  
Fax: 305-624-1126

**TAURUSUSA.COM**

MKG50022 REV.3

