

A WORD TO THE WISE

MOST FIREARMS ACCIDENTS HAPPEN
BECAUSE THE SHOOTER CARELESSLY
VIOLATES THE SINGLE MOST
IMPORTANT RULE OF SAFE FIREARM
HANDLING:
ALWAYS KEEP THE MUZZLE POINTED
IN A SAFE DIRECTION!

IMPORTANT:
DO NOT DISCARD
KEEP THIS MANUAL WITH YOUR
FIREARM. UPON CHANGE OF
OWNERSHIP, TRANSFER THIS MANUAL
WITH THE FIREARM.



TAURUS

Forjas Taurus, S.A
Av. do Forte, 511 - Caixa Postal: 44
Fone: 55-51-30213000 - Fax: 55-51-30213110
91360-000 - Porto Alegre - RS - Brasil



TAURUS

Taurus International Manufacturing, Inc.
16175 NW 49 Avenue
Miami, Florida 33014
Telephone: (305)624.1115 - Fax: (305)624.1126

®

TAURUS



RIFLES AND CARBINES

General Safety,

Operating Instructions

and Limited Warranty

**READ CAREFULLY BEFORE
USING YOUR FIREARM**

**Important: Keep this manual with
your firearm.**

The information contained in this manual is useful, both for beginners and experienced shooters. In addition to important information about functioning, cleaning and care of the gun, the manual contains instructions that may be very helpful in shooting properly.

The most important rule of safe gun handling is always keep the muzzle pointed in a safe direction!

Warning

Never allow a minor to shoot without adult supervision. Never leave a firearm in the possession of a minor. When shooting with a child, make sure to remain close and safely supervise all activities. If you need to leave the area, take the firearm and the child with you. Always make sure to store firearms and ammunition separately.

Notice:

It is recommended that you record the model number, serial number and date of purchase of your Taurus firearm for future reference. Be sure to retain your store receipt and any other documentation that came with your Taurus.

Model Number _____

Serial Number _____

Date of Purchase _____

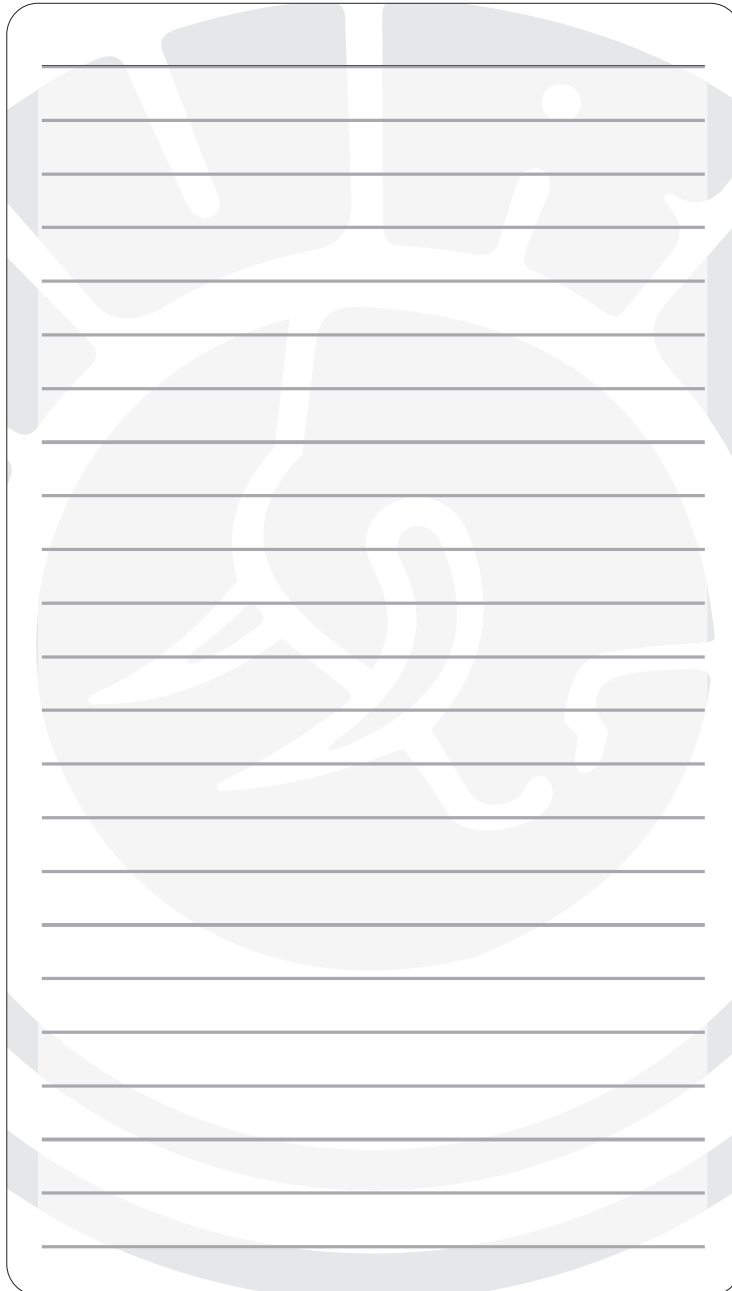


This trademark, forged for over 60 years of hard and dedicated work, became a symbol of quality in handguns for civilian, police and military use. This outstanding quality is the result of constant technological evolution and from the devoted work of expert gunsmiths and highly specialized professionals, which makes TAURUS a respected name in more than 75 countries all over the world.

The information in this manual is provided as guidelines and directions for the safe use of your firearm. Taurus can not be held responsible for the misuse, illegal or negligent use of our products. We strongly encourage all firearms owners to observe all firearms safety rules.

Keep this and all firearms and ammunition away from unsupervised children.
Firearms safety is everyone's responsibility.

NOTES



This Booklet

The safety warnings in this booklet are important. By understanding the dangers inherent in the use of any firearm, and by taking the precautions described herein, you can enjoy complete safety in the use of your Taurus firearm. Failure to heed any of these warnings may result in serious injury to you or others, as well as severe damage to the firearm or other property.

Dangerous Weapons

SHOTGUNS, RIFLES and PISTOLS are classified as FIREARMS or DANGEROUS WEAPONS and are sold by us with the specific understanding that we are not responsible in any manner whatsoever for their improper or negligent handling or resale under local laws and regulations.

Taurus shall not be responsible in any manner whatsoever for malfunctioning of the firearm, or for physical injury or property damage, resulting in whole or in part from (1) criminal or negligent discharge, (2) improper or careless handling, (3) unauthorized modifications, (4) defective, improper hand-loaded, or reloaded ammunition, (5) neglect, or (6) other influences beyond our direct and immediate control. This limitation applies regardless of whether liability is asserted on the basis of contract, negligence or strict liability (including any failure to warn). Under no circumstance shall Taurus be liable for incidental or consequential damages, such as loss of use of property, commercial loss and loss of earnings or profits.

Warning

Securing your firearm may inhibit access to it in a defense situation and result in injury or death.

Warning

Failure to properly secure a firearm may result in injury or death.

Safety Warnings

Not Just For Beginners

Regardless of your familiarity or experience with firearms, you need to study this manual.

The safe handling of firearms requires specialized training, discipline and caution. Firearms, by their nature and intended function, are deadly instruments. Accidental death or serious injury can result if they are handled improperly or carelessly.

Firearms rarely cause accidents. Firearms accidents almost always are caused by a failure to obey the basic rules of gun safety. Unfortunately, experienced shooters seem to violate these rules as frequently as beginners. Thus the basics of safe firearms handling cannot be repeated too often. Read, re-read and practice the basic principles of firearms safety until they become second nature: habits that you don't forget.

If you have any question about your knowledge or ability to use this or any other firearm with complete safety you should seek supervised instruction. Personalized instruction is often available from firearms dealers, gun clubs, state hunter safety programs or police departments in the United States. If none of these sources is accessible, write to the National Rifle Association, 11250 Waples Mill Road, Fairfax, VA 22030 or at www.nra.org. THEY WILL ASSIST YOU.

A person with a firearm in his possession has a full-time responsibility. He must KNOW how to keep and use his firearm safely, and then must always TAKE the precautions necessary -all of them. He cannot guess; he cannot forget. This responsibility is his alone. It cannot be passed off to someone else.

Remember: no firearm can be made accident-proof. A firearm is just a machine, with no judgement of its own. It responds to your actions, whether wise or foolish. The only truly effective safety device is the mind of a cautious shooter who never forgets that a moment's carelessness can produce permanent tragedy.

Model Specifications

Model	Caliber	Capacity	Barrel Length	Overall Length	Weight	Finish
M62R	.22 LR	14	23"	39"	79.4 oz.	B SS
M62C	.22 LR	12	16-1/2"	32-1/2"	74 oz.	B SS
M72R	.22 MAGNUM	12	23"	39"	79.4 oz.	B SS
M72C	.22 MAGNUM	10	16-1/2"	32-1/2"	74 oz.	B SS
M172R	.17 HMR	10	23"	39"	79.4 oz.	B SS
M172C	.17 HMR	10	16-1/2"	32-1/2"	74 oz.	B SS
M63	.22LR	10	23"	39"	79.4 oz	B SS
M62LAR	.22LR	14	23"	39"	79.4 oz	B SS
M62LAC	.22LR	12	16-1/2"	32-1/2"	74 oz	B SS

B = Blue SS = Stainless Steel

The information in this manual is provided as guidelines and directions for the safe use of your firearm. Taurus can not be held responsible for the misuse, illegal or negligent use of our products. We strongly encourage all firearms owners to observe all firearms safety rules.

Keep this and all firearms and ammunition away from unsupervised children.
Firearms safety is everyone's responsibility.

Taurus Limited Warranty

What Does This Warranty Cover?

This warranty covers any service and repair needed by any product manufactured by Forjas Taurus SA., and imported by Taurus International Manufacturing, Inc. or manufactured in the United States by Taurus International Manufacturing, Inc.

How Long Does Coverage Last?

This warranty is of unlimited duration.

What Will We Do?

Taurus will service and/or repair all covered products free of charge.

What Does This Warranty Not Cover?

This warranty does not cover stocks, forends, sights, accessories, cosmetic defects after one year, or damage caused by customer abuse at any time. This express limited warranty is the only warranty on this product. This product is sold “as is” and has no implied warranties of merchantability or fitness for a particular purpose. There are no warranties which extend beyond the description on the face hereof.

How Do I Get Service?

To simplify repair and service Forjas Taurus and Taurus International products are serviced and repaired by Taurus International. Questions regarding the products of either company can be directed to Taurus International in Miami, Florida at 1-305-624-1115 or in writing to:

16175 NW. 49th Avenue
Miami, Florida 33014
in care of the Consumer Affairs Department.

WARNING:

Taurus rifles are manufactured to perform properly with the original parts as designed. It is your duty to make sure any parts you buy are installed correctly and that neither replacements nor originals are altered or changed. Your firearm is a complex tool with many parts that must relate correctly to other parts. Putting a firearm together wrong or with modified parts can result in a damaged firearm, danger and injury or death to you and others through malfunction. Always have a qualified gunsmith work on your firearm.

WARNING:

To prevent injury or death, it is imperative that you must keep your gun unloaded, uncocked and securely locked, with ammunition in a separate location. In addition, take any other reasonable steps to limit the possibility of theft, crime, accident or suicide.

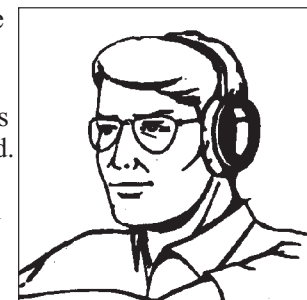
DANGER:

Protect Your Eyes and Ears

Always wear adequate shooting glasses and ear plugs or “ear muff” type protectors whenever you are shooting.

Always make certain that persons close to you are similarly protected.

Unprotected eyes may be injured By powder, gas, carbon residue, Lubricant, metallic particles or similar debris which may emanate occasionally from any firearm in normal use.



Without ear protection, repeated exposure to shooting noise may lead to cumulative, permanent hearing loss.

Firearms Are Not all Alike

Many makes and models of firearms might LOOK nearly the same. However, they differ widely in design and operation, and in the location and function of various controls.

Study this manual thoroughly. Educate yourself on the characteristics and operation of your particular firearm before attempting to handle it. Do not permit others to handle it - unless they also have done so.

You should have an instruction manual for every firearm you own. If you do not, write the manufacturer and obtain one. Most manufacturers will gladly send you one free. If for any reason a manual is not available, visit your public library. Many books have been published which contain detailed information on obsolete or discontinued firearms.

Your knowledge can prevent injuries.

Taurus firearms are designed and made to offer maximum safety when correctly used. However, as with any other weapon, it is not foolproof, and may become very dangerous if the following basic recommendations are not RIGIDLY observed:

Attention

NOTICE: Get instruction from a competent firearms instructor before using any firearm.

NOTICE: Never cock the firearm until you are ready to shoot.

DANGER: Never, never-ever point any firearm, loaded or unloaded, at anything you do not intend to shoot.

DANGER: Load and unload with the muzzle pointed in a safe direction.

DANGER: When receiving a firearm always check that it is unloaded (open breech and inspect the chamber), even if you saw it done previously.

DANGER: Never put your hand over the muzzle of a firearm.

DANGER: Check ammunition to be sure it is the right size and caliber, and that it is not dented.

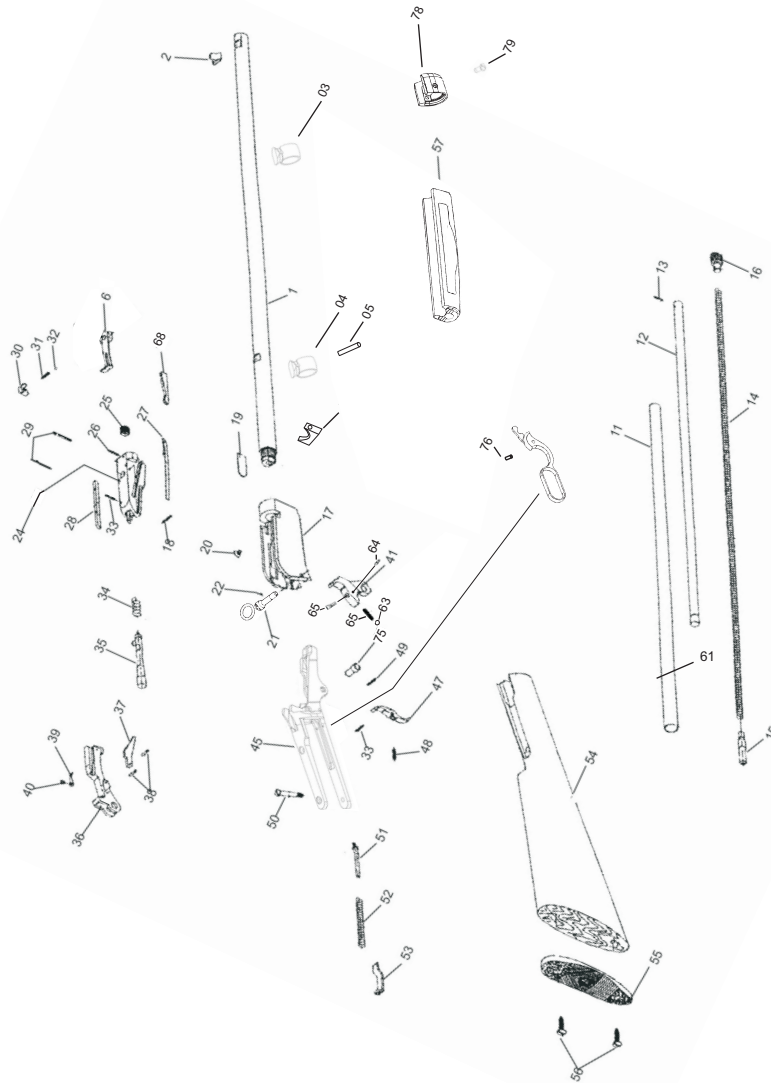
DANGER: WHILE HANDLING ANY FIREARM, NEVER ALLOW IT TO POINT AT ANY PART OF YOUR BODY OR AT ANOTHER PERSON. NO HARM SHOULD RESULT IF YOU OBEY THIS RULE, EVEN IF AN ACCIDENTAL DISCHARGE OCCURS.

DANGER: Don't try to change your firearm's trigger pull, because alteration of trigger pull usually affects sear engagement and may cause accidental discharge.

Parts List for Lever Action Model 62LA

BARREL.....1	TRIGGER PIN.....46
FRONT SIGHT.....2	TRIGGER.....47
MAGAZINE FRONT	TRIGGER SPRING.....48
SUPPORT.....3	HAMMER SPRING GUIDE.....51
MAGAZINE REAR	HAMMER SPRING.....52
SUPPORT.....4	HAMMER SPRING
REAR MAGAZINE RIGHT	SUPPORT.....53
PIN.....5	STOCK.....54
REAR SIGHT ASSEMBLY.....6	BUTT PLATE.....55
MAGAZINE GUIDE.....11	BUTT PLATE SCREW.....56
MAGAZINE TUBE.....12	FOREND.....57
MAGAZINE PLUG PIN.....13	FOREND SCREW.....58
MAGAZINE SPRING.....14	WASHER PRESSURE.....59
HAND.....15	FINGER LEVER.....61
BUTTON.....16	BOX AND FRAME
FRAME BOX.....17	ASSEMBLY.....62
BARREL PIN.....18	KEY LOCK BALL.....63
SCREW FIX.....21	HAMMER KEY LOCK PIN
BREECH BOLT.....24	SCREW.....64
FIRING PIN BUSHING.....25	SAFETY SPRING.....65
FIRING PIN BUSHING.....26	SAFETY SCREW.....66
EXTRACTOR.....27	SAFETY SPRING BALL.....67
FIRING PIN STOP.....28	REAR SIGHT ELEVATOR.....68
EXTRACTOR FIRING PIN.....29	MAGAZINE ASSEMBLY.....69
SAFETY.....30	STOCK ASSEMBLY.....70
SAFETY SPRING.....31	FEEDER ASSEMBLY.....71
HAMMER SPRING	RING AND SCREW
SUPPORT PIN.....33	ASSEMBLY.....72
FIRING PIN SPRING.....34	ACTION SLIDE SCREW.....75
FIRING PIN.....35	FINGER LEVER BUSHING.....76
FEEDER.....36	FOREND CAP SUPPORT.....77
CARRIER LEVER.....37	FOREND CAP ASSEMBLY.....78
CARRIER LEVER PIN.....38	FOREND SUPPORT
CARRIER LEVER SPRING.....39	SCREW.....79
CARRIER LEVER SPRING	SUPPORT.....80
SCREW.....40	FOREND CAP PIN.....81
HAMMER ASSEMBLY.....41	
HAMMER KEY ASSEMBLY	
W/KEY LOCK.....42	
FRAME.....45	

Exploded Diagram - 62LA



DANGER: Never engage a gun lock on a loaded firearm.

WARNING: Always treat every firearm as if it were loaded.

WARNING: Keep your finger off the trigger until you are actually aiming at the target ready to shoot.

WARNING: Be certain the firearm is unloaded before cleaning.

WARNING: Always empty firearms before entering a place where there are people.

WARNING: Don't test the safety by pulling the trigger while the safety is on unless you are absolutely sure the firearm is empty and you are pointing the muzzle away from everyone and in a safe direction.

WARNING: Old or reloaded ammunition may be dangerous. We recommend against using it.

WARNING: Never pull a firearm towards you by the muzzle. Don't climb a tree or cross a fence with a loaded firearm.

CAUTION: If there is any reason to suspect that a bullet is obstructing the barrel, immediately unload the firearm and look through the bore. It is not sufficient to merely look in the chamber.

SAFETY FIRST: Be sure of your target and backstop before you shoot.

SAFETY FIRST: The safety is only a mechanical device, not a substitute for common sense.

SAFETY FIRST: Never leave a loaded firearm unattended.

SAFETY FIRST: Store firearms and ammunition separately beyond the reach of children.

SAFETY FIRST: Firearms and alcohol or drugs don't mix.

SAFETY FIRST: If a firearm fails to fire when the trigger is pulled, keep it pointed at the target for at least 30 seconds. Sometimes slow primer ignition will cause a "hang" fire and the cartridge will go off after a short pause.

SAFETY FIRST: Never shoot at hard flat surfaces or water. Bullet may ricochet.

SAFETY FIRST: Use a proper bench or rifle rack and aim the gun only if you intend to shoot.

SAFETY FIRST: Dry firing is bad for this firearm, whether the hammer block is engaged or not.

SAFETY FIRST: Treat this firearm as a precision instrument.

SAFETY FIRST: Write to us concerning any items or circumstances which might relate to your safety and the operation of our products.

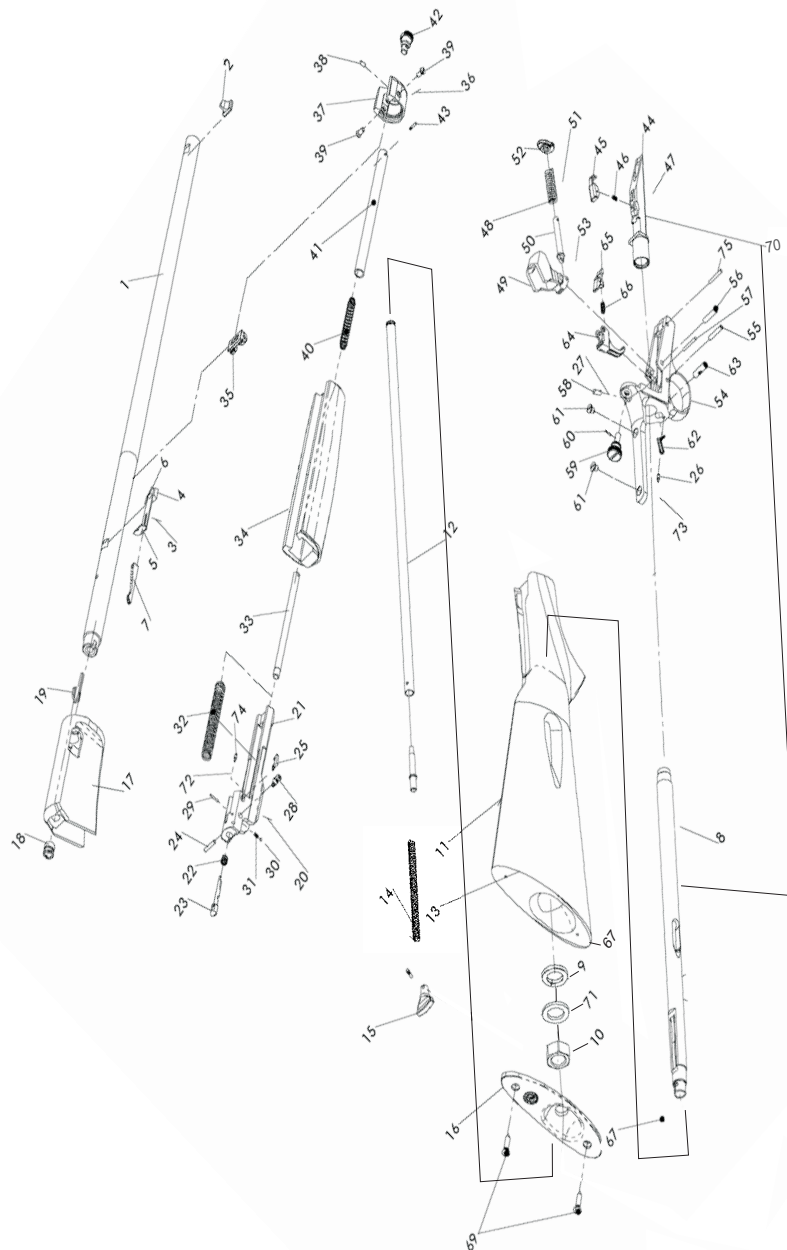
WARNING: Ammunition

1. Use only high quality, original, factory-manufactured ammunition, of the caliber appropriate to your firearm as indicated on the barrel. Do not use cartridges that are dirty, wet, corroded, bent or damaged. Do not oil cartridges. Do not spray aerosol type lubricants, preservatives, or cleaners directly onto cartridges or where excess spray may flow into contact with cartridges. Lubricant or other foreign matter on cartridges can cause potentially dangerous ammunition malfunctions. Use only ammunition of the caliber for which your firearm is chambered. The proper caliber is permanently engraved on your firearm; never attempt to use ammunition of any other caliber.
2. The use of reloaded, “remanufactured”, hand-loaded, or other non-standard ammunition voids all warranties. Improperly loaded ammunition voids all warranties. Improperly loaded ammunition can be extremely dangerous. Severe damage to the firearm and serious injury to the shooter or to others may result. Always use ammunition that complies with the industry performance standards established by the Sporting Arms and Ammunition Manufacturers Institute, Inc., of the United States, (SAAMI) or the equivalent from other countries.
3. Firearms may be severely damaged and serious injury to the shooter or to others may result from any condition causing excessive pressure inside the chamber or barrel during firing. Excessive pressure can be caused by obstructions in the barrel, propellant powder overloads, or by the use of incorrect cartridges or defectively assembled cartridges. In addition, the use of a dirty, corroded, or damaged cartridge can lead to a burst cartridge case and consequent damage to the firearm and personal injury from the sudden escape of high-pressure propellant gas within the firearm’s mechanism.
4. Immediately stop shooting and check the barrel for a possible obstruction whenever:
 - You have difficulty in, or feel unusual resistance in, chambering a cartridge, or
 - A cartridge misfires (does not go off), or
 - The mechanism fails to extract a fired cartridge case, or
 - Unburned grains of propellant powder are discovered spilled in mechanism, or
 - A shot sounds weak or abnormal. In such cases it is possible that a bullet is lodged part way down the barrel. Firing a subsequent bullet into the obstructed barrel can wreck the firearm and cause serious injury to the shooter or to bystanders.

Parts List Model 63

BARREL	1	ACTION SLIDE SPRING	40
FRONT SIGHT	2	ACTION SLIDE	41
REAR SIGHT ASS'Y	3	ACTION LEVER BUTTON	42
..(Includes #4, #5 and #6)		ACTION LEVER	
REAR SIGHT BLADE	4	BUTTON PIN	43
REAR SIGHT SUPPORT	5	FEEDER	44
REAR SIGHT RIVET	6	AMMUNITION	
REAR SIGHT ELEVATOR	7	RETAINER	45
MAGAZINE TUBE LINER	8	AMMUNITION RETAINER	
MAG TUBE WASHER	9	SPRING	46
MAGAZINE TUBE NUT	10	AMMUNITION RETAINER	
MAGAZINE TUBE	11	PIN	47
..(Includes #12, #13, #14, #15 and #16)		HAMMER SPRING ASS'Y	48
TUBE	12	HAMMER	49
(Includes #12, #13, #14, #15 and #16)		HAMMER SPRING GUIDE	50
MAGAZINE FOLLOWER	13	HAMMER SPRING	51
MAGAZINE SPRING	14	HAMMER SPRING PLATE	52
MAGAZINE PLUG	15	HAMMER SPRING	
MAGAZINE PLUG PIN	16	GUIDE PIN	53
RECEIVER	17	FRAME	54
RECEIVER BUSHING	18	TRIGGER PIN	55
EJECTOR	19	HAMMER PIN	56
MAG BREECH BOLT	20	AMMUNITION RETAINER	
(Includes #21, #22, #23, #24, #25, #26 and #27)		PIN	57
BREECH BOLT	21	ASSEMBLY SCREW	
FIRING PIN SPRING	22	PLUNGER	58
FIRING PIN	23	ASSEMBLY SCREW	59
FIRING PIN PIN	24	ASSEMBLY SCREW	
EXTRACTOR	25	RETAINER	60
PLUNGER	26	TANG SIGHT SCREW	61
PLUNGER SPRING	27	TRIGGER SPRING	62
KEY LOCK	28	TRIGGER SAFETY	63
KEY LOCK PIN	29	TRIGGER	64
KEY LOCK BALL	30	SEAR	65
KEY LOCK SPRING	31	SEAR SPRING	66
RECOIL SPRING	32	STOCK	67
RECOIL SPRING GUIDE	33	BUTT PLATE	68
FOREND	34	BUTT PLATE SCREW	69
FOREND CAP SUPPORT	35	FEEDER ASS'Y	70
FOREND CAP ASS'Y	36		
FOREND CAP	37		
FOREND CAP PIN	38		
FOREND SCREW	39		

Exploded Diagram Model 63



5. Bullets can become lodged in the barrel.

- If the cartridge has been improperly loaded without propellant powder, or if the powder fails to ignite (Ignition of the cartridge primer alone will push the bullet out the cartridge case, but usually does not generate sufficient energy to expel the bullet completely from the barrel).

- If the bullet is not properly seated tightly in the cartridge case. When such a cartridge is extracted from the chamber without being fired, the bullet may be left behind in the bore at the point where the rifling begins. Subsequent chambering of another cartridge may push the first bullet further into the bore.

6. If there is any reason to suspect that a bullet is obstructing the barrel, immediately unload the firearm and look through the bore. It is not sufficient to merely look in the chamber. A bullet may be lodged some distance down the barrel where it can not easily be seen.

IF A BULLET IS IN THE BORE, DO NOT ATTEMPT TO SHOOT IT OUT BY USING ANOTHER CARTRIDGE, OR BY BLOWING IT OUT WITH A BLANK OR ONE FROM WHICH THE BULLET HAS BEEN REMOVED. SUCH TECHNIQUES CAN GENERATE EXCESSIVE PRESSURE, WRECK THE FIREARM AND CAUSE SERIOUS PERSONAL INJURY.

If the bullet can be removed with a cleaning rod, clean any unburned powder grains from the bore, chamber, and mechanism before resuming shooting. If the bullet cannot be dislodged by tapping it with a cleaning rod, take the firearm to a gunsmith.

7. Dirt, corrosion, or other foreign matter on a cartridge can impede complete chambering and may cause the cartridge case to burst upon firing. The same is true of cartridges which are damaged or deformed.

8. Do not oil cartridges, and be sure to wipe the chamber clean of any oil or preservative before commencing to shoot. Oil interferes with the friction between cartridge case and chamber wall that is necessary for safe functioning, and subjects the firearm to stress similar to that imposed by excessive pressure.

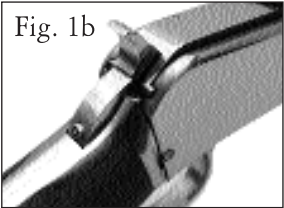
9. Use lubricants sparingly on the moving parts of your firearm. Avoid excessive spraying of any aerosol firearm care product, especially where it may get on ammunition. All lubricants and aerosol spray lubricants in particular, can penetrate cartridge primers and cause misfires. Some highly penetrative lubricants can also migrate inside cartridge cases and cause deterioration of the propellant powder; on firing, the powder may not ignite. If only the primer ignites, there is danger that the bullet may become lodged in the barrel.

Taurus Security System
Models 62, 72, 172 and 62LA

This rifle is equipped with the exclusive “TAURUS SECURITY SYSTEM”. The system is designed to preclude use of the rifle when the mechanism is engaged. It consists of an integral mechanism located on the back portion of the hammer. When properly engaged, by use of the key, it prevents the functioning of the rifle. The engagement of the mechanism can only be done utilizing a key with a shape that fits the security mechanism.

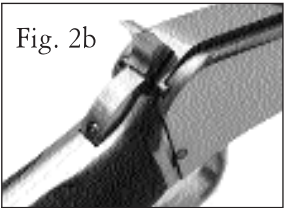
1. Engagement (Secure)

To engage the deactivation mechanism, it is necessary to insert the key into the deactivation pin and turn it clockwise until a “click” is felt or heard (Fig. 1a). In this position, the rifle’s mechanism is locked and the pin protrudes above the surface of the back of the hammer (Fig. 1b).



2. Disengagement (Ready-to-Fire)

To place the rifle in a firing condition, one must insert the key in the security mechanism and turn the key counter clockwise (Fig.2a). In this position, the top of the pin is on the same plane with the rest of the back portion of the hammer (Fig. 2b). The rifle is now ready to fire.



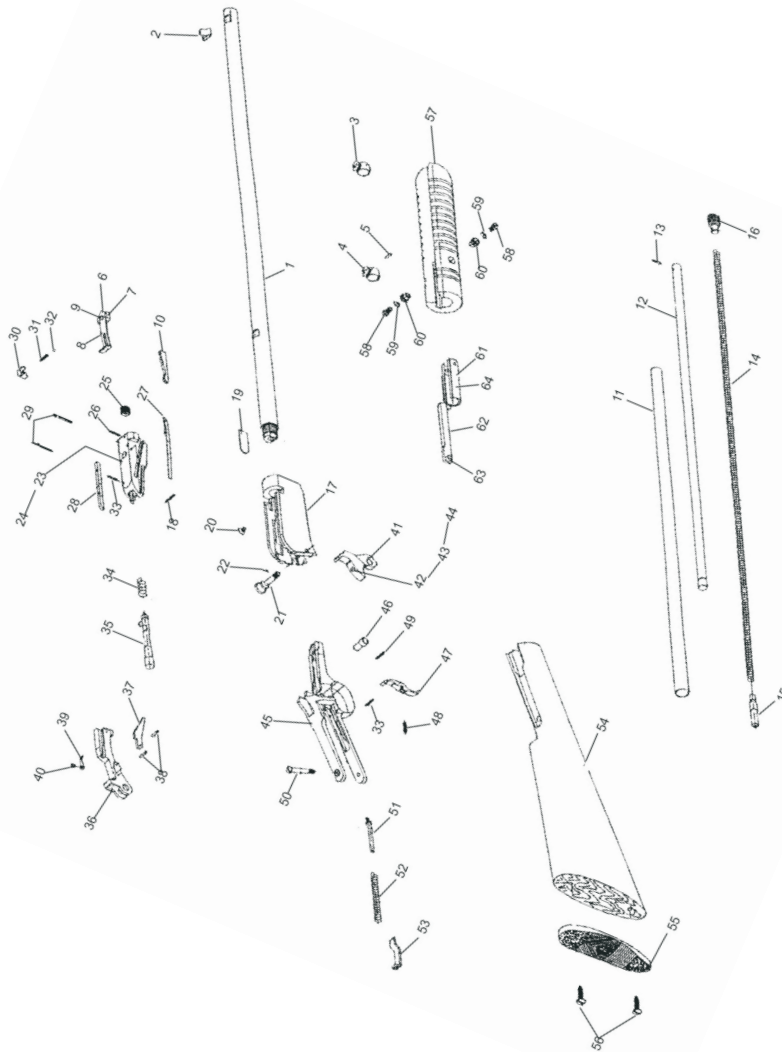
Warning

Never disassemble the safety. It has been correctly designed, fitted and tested. Any mechanical device can fail, however, so never rely on the safety to justify careless handling. Never use a firearm with a safety that does not function properly.

Parts List Models 62, 72 and 172

BARREL.....	1	SPRING SCREW.....	40
FRONT SIGHT	2	HAMMER ASSY.....	41
FRONT MAGAZINE RING.....	3	KEY LOCK.....	42
REAR MAGAZINE RING	4	KEY LOCK SPRING	43
REAR MAGAZINE RING PIN ..	5	KEY LOCK BALL.....	44
REAR SIGHT ASSEMBLY	6	FRAME.....	45
REAR SIGHT SUPPORT.....	7	ASSY SCREW BUSHING	46
REAR SIGHT BLADE.....	8	TRIGGER	47
REAR SIGHT RIVET.....	9	TRIGGER SPRING.....	48
REAR SIGHT ELEVATOR.....	10	TRICEER PIN	49
MAGAZINE TUBE LINER	11	STOCK/GUARD SCREW.....	50
MAGAZINE TUBE.....	12	HAMMER SPRING GUIDE....	51
MAGAZINE PLUG PIN	13	HAMMER SPRING.....	52
MAGAZINE SPRING	14	HAMMER SPRING	
MAGAZINE FOLLOWER	15	SUPPORT	53
MAGAZINE PLUG.....	16	STOCK.....	54
RECEIVER	17	BUTT PLATE.....	55
SAFETY PIN.....	18	BUTT PLATE SCREW.....	56
SLIDE PLATE	19	FOREND.....	57
SLIDE PLATE SCREW	20	FOREND SCREW.....	58
ASSEMBLY SCREW	21	PRESSURE WASHER.....	59
ASSY SCREW STOP PIN	22	FOREND BUSHING	60
BREECH BOLT ASSY	23	ACTION SLIDE.....	61
BREECH BOLT.....	24	ACTION LEVER.....	62
FIRING PIN BUSHING	25	ACTION LEVER PIN	63
FIRING BUSHING PIN	26	ACTION LEVER TUBE	64
EXTRACTOR	27		
FIRING PIN STOP.....	28		
EXTRACTOR PIN	29		
SAFETY.....	30		
SAFETY SPRING	31		
SAFETY SPRING BALL	32		
HAMMER SPRING			
SUPPORT PIN	33		
FIRING PIN SPRING	34		
FIRING PIN	35		
CARRIER.....	36		
CARRIER LEVER.....	37		
CARRIER LEVER PIN	38		
CARRIER LEVER SPRING	39		
CARRIER LEVER			

Exploded Diagram Model 62, 72 and 172



Taurus Security System Model 63

This rifle is equipped with the exclusive “TAURUS SECURITY SYSTEM”. The system is designed to preclude use of the rifle when the mechanism is engaged. It consists of an integral mechanism located on the right rear portion of the breech bolt, which can be seen in the ejection port of the receiver. When properly engaged, by use of the key, it prevents the functioning of the rifle by locking the bolt and the firing pin and obstructing the movement of the bolt and the firing pin. The engagement of the mechanism can only be done utilizing a key with a shape that fits the security mechanism.

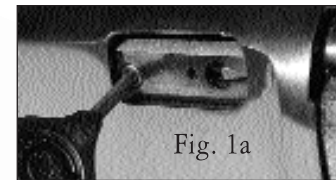


Fig. 1a

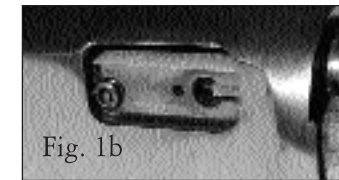


Fig. 1b

1. Engagement (Secure)

To engage the deactivation mechanism, it is necessary to insert the key into the deactivation pin (Fig. 1a) and turn it clockwise until a “click” is felt or heard. In this position, the rifle’s mechanism is locked and the pin protrudes above the surface of the right rear of the breech bolt (Fig. 1b).

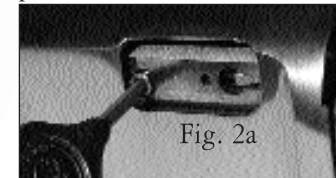


Fig. 2a

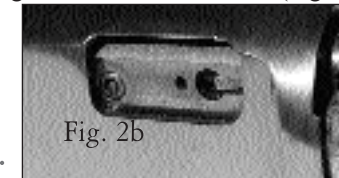


Fig. 2b

2. Disengagement (Ready-to-Fire)

To place the rifle in a firing condition, one must insert the key in the security mechanism (Fig. 2a) and turn the key counter clockwise. In this position, the top of the pin is on the same plane with the right side of the breech bolt (Fig. 2b). The rifle is now ready to fire.

Warning

Never tamper with the security system or attempt to use anything other than the provided special key to operate the security system. Attempting to defeat the Taurus Security System may damage your firearm. Never use a firearm on which the Taurus Security System appears to have been tampered with. Doing so will create a hazardous situation and may damage the firearm and result in accidental death or serious injury.

Warning

Discharging firearms in poorly ventilated areas, cleaning firearms, or handling ammunition may result in exposure to lead and other substances known to cause birth defects, reproductive harm, and other serious physical injury. Have adequate ventilation at all times. Wash hands thoroughly after exposure.

Pump and Lever Action Operating Instructions

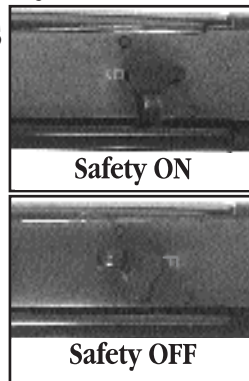
(Semi-Automatic instructions on page 17)

How To Operate The Safety on 62, 72, 172 and 62LA models

Warning

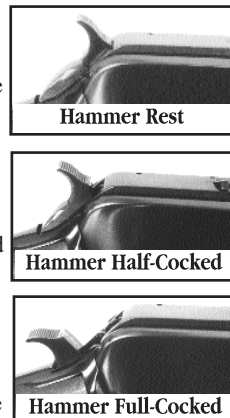
Prior to firing, know and understand the operation of the safety by practicing with the rifle unloaded.

The safety is a lever located on top of the breech bolt. When the elevated portion of the lever is in line with the barrel and the red "F" is exposed, the rifle will fire when the hammer is in full-cock position and the trigger is pulled. When the elevated portion of the safety lever is turned to the right and is perpendicular to the barrel and the green "S" is exposed, the rifle will not fire when the trigger is pulled.



Warning

Never put the safety between the Safe and Fire notches. Unless the safety is positioned in one of the two notches, you cannot be certain whether it is on safe or fire. The safest way to carry this rifle is with **NO** round in the chamber. If you feel that you must carry the rifle with a round in the chamber, then the safety lever must be on SAFE and the hammer placed in the half-cocked notch. Then, to fire, the hammer should be placed in the fullcocked position and then the safety placed in the fire position. Always keep this rifle on Safe regardless of the position of the hammer, whether loaded or unloaded. The only time the safety lever should be placed in the Fire position is when you intend to shoot.



SAFETY FIRST: Parts

All firearms require periodic maintenance and inspection which may reveal a need for adjustment or repair. Have your firearm checked by a competent gunsmith annually, even if it seems to be working well, since breakage, improper functioning, undue wear, or corrosion of some components may not be apparent from external examination. If you notice ANY mechanical malfunction, do NOT continue to use the firearm. UNLOAD the firearm and take it to a competent gunsmith immediately.

Our Service Department maintains a full complement of replacement parts for our firearms of current manufacture. Even though most gunsmiths have the knowledge, training and ability to make the necessary repairs to your firearm, the skill and workmanship of any particular gunsmith is totally beyond our control. Should your firearm ever require service, we strongly recommend that you return it to Taurus. Follow the instructions outlined below. Remember, unauthorized adjustments or parts replacement can void your warranty. It is the responsibility of the purchaser to be absolutely certain that any parts ordered from Taurus are of the correct type and are properly fitted and installed by a competent person. THIS FIREARM IS A PRECISION MECHANISM AND THE IMPROPER FITTING OF PARTS OR IMPROPER MECHANICAL ADJUSTMENT MAY RESULT IN A DANGEROUS MALFUNCTION, DAMAGE TO THE FIREARM, AND POSSIBLE SERIOUS INJURY TO THE SHOOTER OR TO OTHERS. Therefore, the purchaser and/or installer of parts must accept full responsibility for the correct adjustment of and function of the firearm after such installation has been made or attempted.

3. Be sure to enclose a letter stating your name, address and telephone number, serial number, caliber and barrel length of your firearm. Also state nature of trouble experienced or work required. Merely stating “defective” or “repair as necessary” is inadequate information. Be specific and enclose copies of any previous correspondence. Work (other than warranty repair) will bear minimum labor charge of \$10.00.

4. FIREARMS MUST BE SHIPPED UNLOADED. Double check the chamber of your firearm before shipping. If firearms are sent to Taurus in a loaded condition, we are required by law to notify the Federal authorities.

5. DO NOT include telescopic sights; custom grips, holsters, or other accessories with any firearm shipped to us.

How To Load Your 62, 72, 172 and 62LA Magazine

Warning

Never attempt to load your rifle with ammunition that does not meet the cartridge designation stamped on the barrel. Use only clean, dry, factory-loaded ammunition in the caliber appropriate to your firearm. The proper caliber is stamped on the barrel.

Warning

Before loading this firearm, always check the bore to be sure it is free of grease, oil or any other obstruction. Be sure the chamber is empty, bolt is open and the safety is on SAFE. To avoid having your hands near the muzzle of a loaded rifle, never add cartridges to a partially loaded tubular magazine.

Warning

This rifle will not function properly unless the inner magazine tube is locked securely in place.



OPEN THE BOLT by first carefully allowing the hammer to move forward UNDER **CONTROL OF YOUR THUMB** while pulling the trigger until the hammer is in the fully forward (at rest) position, then pull forend smartly to the rear (pump actions model) or cycle the lever down (Lever Action models).

Then, with the safety on SAFE, keeping your fingers away from the muzzle, turn your rifle upside down muzzle up and unlock the inner magazine tube by turning the knurled locking end plug (see Fig. 1). Pull the inner tube out until the loading port is exposed. Insert the cartridges, bullet end toward the muzzle (see Fig. 2).

When you have loaded up to the stated magazine capacity, shown in this manual under “Specifications”, slide the tube back in place, turning it slightly to ease passage over the loaded rounds. **DO NOT FORCE THE TUBE DOWN.** Then rotate the knurled locking end plug to the locked position. Inner tube will not lock in place if the number of cartridges loaded exceeds the stated magazine capacity.

Cocked and Ready

To chamber the first cartridge, close the bolt by moving the forend forward (Pump Action models) or cycle the lever up (Lever Action models), then cycle the action again. Always keep the safety on SAFE. The firearm is now cocked and ready to fire.

To Fire

With the firearm pointed at the target, move the safety to the FIRE position and squeeze the trigger. Open and close the bolt completely for each repeat shot. If you have not fired all cartridges at the target, be sure to put the safety on SAFE until you are ready to shoot again.

Repair Instructions

Your firearm has been designed, engineered and manufactured in accordance with Taurus’ rigid quality control standards. However, any mechanical device may occasionally require adjustment or repair.

Taurus Service Policy

Before shipment, your firearm was carefully inspected and test fired in order to ensure that it conformed to our specifications and standards. Should your firearm require adjustment or repair, we strongly recommend that you return it to Taurus for factory service.

If there is any question regarding the performance of your firearm, please write to our Service Department fully describing all circumstances and conditions involved. If our Service Department makes the determination that your firearm requires factory service, you will be so advised and will be given instructions for the most expeditious handling of your shipment.

Our Service Department will give your firearm a complete inspection, and evaluate the problem (s) specified in your letter. If the work required is not covered under the terms of our “Warranty” (when applicable) you will receive an actual cost quotation, not an estimate. Any charge for repair work must be authorized by you, and no work will be done without your expressed approval.

Please follow these suggestions to expedite service in the United States of America to return any firearm to us for adjustment or repair.

1. Federal law permits you to return your firearm to the manufacturer for service via common carriers. However, state and local firearms laws vary greatly; you should consult your local prosecuting attorney regarding any restrictive laws in your jurisdiction regarding your shipment or receipt of firearms. With the above in mind, it is strongly recommended that any firearm sent to us for repair be sent through a Federally licensed dealer.

2. All firearms must be shipped to us prepaid. WE WILL NOT ACCEPT COLLECT SHIPMENTS.

Ship to: Taurus Customer Service, 16175 N.W. 49 Ave., Miami, FL 33014.

Disassembly/Takedown/Cleaning of the Semi-Automatic Rifle

Warning

Before disassembling your rifle, make sure that there are no cartridges in the magazine and that the chamber is clear. Disassembling the rifle with cartridges in the magazine and/or chamber can damage your gun and may result in accidental death or serious injury.

The Taurus Model 63 can be disassembled or taken down into 2 parts for easy storage, cleaning and transport. To begin the take down process, remove the magazine tube completely from the butt stock. Loosen the takedown screw until it is fully loose in the frame. The screw will not come out completely. Once the takedown screw is fully loosened, gently pull the stock away from the barrel. Do not force them apart. The rifle will separate into 2 pieces, exposing most of the inner workings for inspection and cleaning.

The rifle may now be cleaned with any firearm cleaning solvent. You should use very little solvent, being careful not to drip onto the wooden stocks. Once the rifle is clean, a light coating of firearm oil should be applied to metal surfaces. Do not over oil the firearm as this can lead to an accumulation of dirt and may cause a malfunction.

Warning

Do not disassemble the rifle any further than shown in these instructions. Further disassembly of the action is not recommended and should only be attempted by a qualified gunsmith. Attempting to further disassemble the rifle may permanently damage the firearm and can lead to accidental death or serious injury from an unintended malfunction.

Reassembling Your Semi-Automatic Rifle

Carefully slide the receiver/barrel into the end of the butt-stock portion. The pieces should go together easily. Do not force. Once the pieces are together, tighten the takedown screw to a fair amount of finger tightness. Do not use tools for further tightening. Reinsert the magazine tube after verifying that there are no cartridges in the rifle.

How To Unload Pump and Lever Action Rifles

With the safety on SAFE, and the rifle pointed in a safe direction, open the bolt and eject the loaded cartridge from the chamber. Cycle the action repeatedly by opening and closing the bolt, until the ejection of cartridges ceases.

Warning

Completely open and fully close the bolt several more times to be certain that the chamber and feed mechanism are empty. Leave the bolt in the open position.

The safest way to unload the rifle is by (1) placing the safety lever on safe; (2) removing the inner magazine tube; (3) pouring out and catching the cartridges; (4) replacing magazine tube; and (5) cycling action several times.

ALWAYS INSPECT INTERIOR OF RECEIVER VISUALLY TO MAKE SURE THAT THE MAGAZINE IS EMPTY AND THE CHAMBER IS EMPTY.

What To Do If Rifle Fails To Fire

1. Misfires: If you squeeze the trigger and the cartridge does not fire, remain in the shooting position and count to 30. Then operate the bolt to eject the misfired cartridge from the firearm.

2. Underpowered Shot: An underpowered cartridge is unusual if the ammunition is fresh, clean, and factory loaded. However, if you hear an unusual sound or low report, you should stop immediately and proceed as follows:

Warning

Because the bullet may actually still be in the barrel, you must unload completely and **then with the bolt open**, look through the barrel from the muzzle end to see if there is any obstruction. If there is, it should be removed by a qualified gunsmith.

Sighting

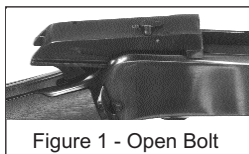
Your rifle was pre-sighted at the factory. However, due to individual sighting characteristics, minor adjustments may be necessary. Always ensure the rifle is pointed in a safe direction. Put the rifle on SAFE and open the bolt before making any sight changes.

1. VERTICAL CORRECTION (Elevation): To raise the point of impact, raise the rear sight. To lower the point of impact, lower the rear sight. The sight can be raised and lowered by moving the stepped elevator forward and back with your thumb.

2. HORIZONTAL CORRECTION (Windage): To move the point of impact to the left, move the rear sight base to the left. To move the point of impact to the right, move the rear sight base to the right.

Windage adjustments to the rear sight can be made by gently tapping the dovetail portion of the rear sight in the desired direction.

How To Clean Your Pump Action Or Lever Action Rifle



Warning

Before cleaning your rifle, be certain it is completely unloaded, and the bolt has been opened.

Never attempt to wipe down or clean a loaded firearm. Follow instructions under “How to Unload” before cleaning.

Locking the Semi-Automatic Action

Warning

These steps should be practiced with an empty rifle at a proper shooting facility always keeping the muzzle pointed in a safe direction. The action on the Taurus Model 63 may be locked in the open position for cleaning, inspection and safe transport. To lock the action, make sure the muzzle is pointed in a safe direction and the safety is in the “ON” or “SAFE” position. Push the Operating Plunger rearward until it stops. With the plunger in the full rearward position, twist the plunger clockwise approximately 1/2 turn. The plunger will not turn past this position. The action is now locked open. The action can be closed by turning the plunger in the opposite direction. It will return to the forward position.

Warning

Closing the port will chamber a round if there are any cartridges in the magazine. Always have the safety in the “ON” or “Safe” position and the muzzle pointed in a safe direction.

Warning

Do not carry the rifle by inserting finger(s) into the ejection port. Should the port close you may damage your firearm and/or cause serious injury to yourself.

Unloading Your Rifle

With the safety in the “ON” or “Safe” position and the action closed, remove the magazine tube completely from the rifle. Carefully, while keeping the muzzle pointed in a safe direction and your finger well clear of the trigger, tip the rifle muzzle-up and allow the cartridges to drop into an appropriate container. Replace the magazine tube and with the safety in the “ON” or “Safe” position, work the Operating Plunger several times to ensure no cartridges are in the chamber or remaining in the magazine. Visually inspect the loading area and chamber to make sure no ammunition is present.

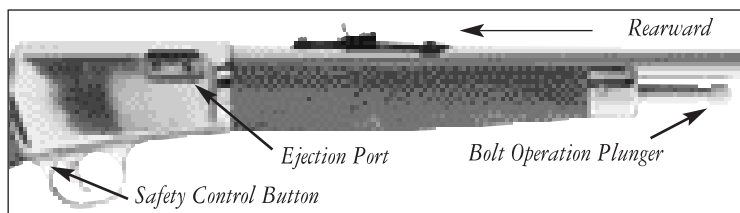
Warning

These directions must be followed precisely. Any deviation or variance may damage your firearm and can result in accidental death or serious injury.

Operating Your Semi-Automatic Rifle

Warning

These steps should be practiced with an empty rifle at a proper shooting facility always keeping the muzzle pointed in a safe direction.



Once the rifle is loaded and the safety is in the “ON” or “SAFE” position, the chamber may be loaded. Be sure the muzzle is pointed in a safe direction and your finger is well clear of the trigger. To load the chamber, push the bolt operation plunger rearward until it stops. This will cause the ejection port to open. Release the plunger and allow it to move back to its forward position. This will load a cartridge into the chamber.

Warning

Your rifle is now loaded and has a round chambered. Keep the muzzle pointed in a safe direction at all times, the safety in the “ON” or “SAFE” position and your finger well clear of the trigger until on target and ready to shoot. Do not carry, throw or drop the rifle with a loaded chamber. Failure to observe these precautions may result in accidental death or serious injury.

Firing Your Semi-Automatic Rifle

Once you are in a safe shooting position, have the muzzle pointed in a safe direction and are safely on target, release the safety by pressing the Safety Control Button towards the left. Be sure to keep your finger off the trigger until ready to shoot. When ready to shoot, smoothly and gently pull the trigger until the rifle discharges. The semi-automatic action will eject the spent case and load a fresh round into the chamber.

Warning

Ejected cases can exit the Ejection Port at high speed and will be hot. Be certain that there is nobody to the right of the rifle as the case will be ejected in that direction.

With normal use it is not necessary to clean the bore of your rifle. However, if the rifle gets wet or if foreign material gets into the action or barrel, cleaning as described below is recommended. Being sure your rifle is unloaded and pointed in a safe direction, cycle the bolt to the rear, as shown in Fig. 1. Clean the bore and barrel by using any standard commercial cleaning rod and cleaning patches. Clean the barrel with powder solvent and wipe lightly with firearm oil after cleaning.

Warning

Further disassembly of the action is not recommended and should only be attempted by a qualified gunsmith.

Models 62, 72, 172 and 62LA Take Down Instructions

If you wish to “take down” your rifle for transport or storage, proceed as follows:

1. Place safety lever on.
2. Make sure rifle is unloaded.
3. Place hammer in “half-cocked” position.
4. Unscrew the knurled knob on left rear of receiver until it turns freely.
5. Pull butt stock and rear of receiver to rear.
6. Reassemble in reverse order.

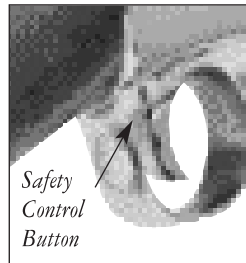
Use a very thin coat of light oil during below freezing conditions. Condensation droplets will form soon after the firearm is brought into a warm room, or it may become wet during inclement weather. In any case, all moisture should be removed. Exterior metal finishes may be wiped down with a slightly oiled cloth. For long term storage, lightly oil the bore, barrel and action with firearm oil. Your firearm should be completely unloaded and stored in a dry area. Never store your firearm in a carrying case.

Semi-Automatic Operating Instructions

How To Operate The Safety

Warning

Prior to firing, know and understand the operation of the safety by practicing with the rifle unloaded.



The Taurus Model 63 Rifle is equipped with a cross bolt type safety. The safety control is located on the rear of the trigger guard. The control is a button that can be operated easily with gloved hands as well as barehanded. When the safety is in the "ON" or "Safe" position, the trigger is blocked from movement and the rifle cannot be fired with a normal trigger pull. It is essential to safe shooting that you become familiar with the operation of the safety before shooting the rifle.

The safety is in the "ON" or "Safe" position when the button is pushed **fully** to the right.

Warning

No safety mechanism is a substitute for safe firearm practices. Do not rely solely on the safety mechanism to prevent accidental discharges. When shooting is not imminent, it is advisable to keep the chamber empty. DO NOT load a round into the chamber until ready to shoot and in a safe shooting position. Even with the safety engaged, always keep the muzzle pointed in a safe direction and your finger well clear of the trigger. The safety mechanism may not prevent an accidental discharge if the rifle is dropped or jarred. Failure to observe safe shooting practices may result in accidental death or serious injury.

Safety First

Always keep the action locked open and the ammunition magazine empty until ready to shoot in a safe situation. Do not transport or store the rifle in a loaded condition. Store ammunition separately.

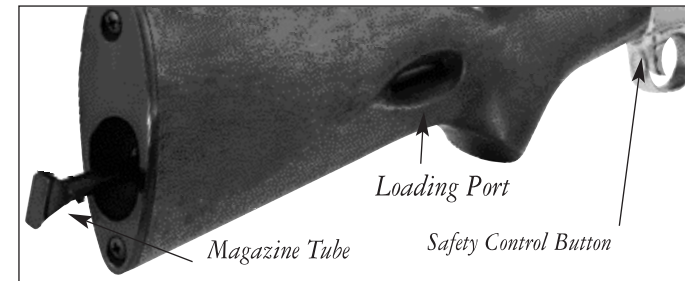
Loading Your Semi-Automatic Rifle

Warning

Never attempt to load your rifle with ammunition that does not meet the cartridge designation stamped on the barrel. Use only clean, dry, factory-loaded ammunition appropriate to your firearm. The correct caliber is stamped on the barrel.

Warning

Before loading this firearm, always check the bore to be sure it is free of grease, oil or any other obstruction. **Be sure** the chamber is empty, action is closed and the safety is in the "ON" or "SAFE" position. This rifle will not function properly unless the magazine tube is locked securely in place in the butt stock.



Twist the end of the magazine tube approximately 1/8 turn counter-clockwise to unlock. Slowly pull the tube out, observing the loading port on the right side of the stock. Pull the magazine tube out until the magazine follower at the end is clear of the loading port. Do not completely remove the tube from the stock.

Point the muzzle in a safe direction and slightly downward. Insert the cartridges, bullet end facing the muzzle, into the loading port one at a time and allow them to slide forward in the internal magazine. Load only 10 rounds of ammunition into the rifle.

Once the ten rounds are loaded, gently, but firmly push the magazine tube into the butt stock until it is completely seated. Turn the tube clockwise until it locks firmly into place. This should be done carefully as the magazine tube is spring loaded and the rifle now contains live ammunition.

Warning

Do not attempt to load this rifle beyond its stated capacity of ten rounds. Your rifle is now loaded. Exercise extreme caution in handling. If you need to leave the firearm, unload it first.